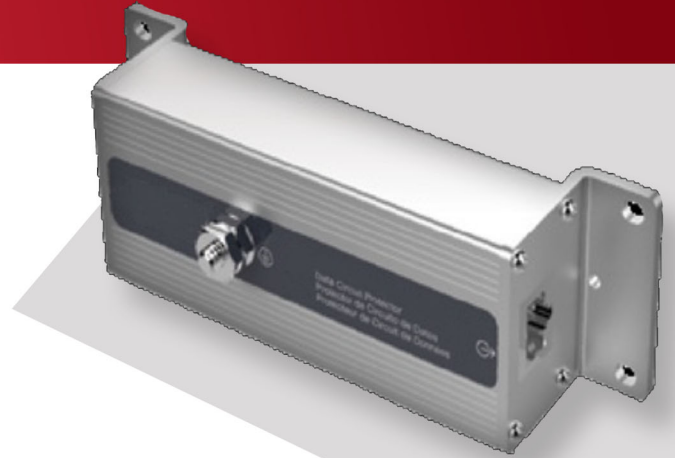


The LEC **TE-195-POE** is a surge protection device for data circuit protection which offers surge protection on category 6 Power-Over-Ethernet applications for loads up to 0.75 amps. This device helps to protect critical video, security and computing equipment from damaging surges, transients and circulating ground currents.



**TE-195-POE**  
SURGE PROTECTION  
DEVICE

### APPLICATIONS

Ideal for protecting expensive/critical computer and video equipment from damaging surges and transients

### FEATURES

- Operating Current: 0.75 A
- Operating Voltage: 48 VDC
- Clamping Voltage: 68 VDC
- Maximum Surge Current: 10 kA
- Insertion Loss: <0.1 db
- Input Connection: RJ45 (female)
- Output Connection: RJ45 (female)
- Mounting: Flange
- Exceeds Category 6 transmission values
- Three stage hybrid circuit
- DC over Ethernet all pins
- UL497B Listed
- Five year limited warranty.

### BENEFITS

- Category 6 Power-Over-Ethernet (POE) transmission line protection
- Optional isolated ground to be used at the equipment end in order to prevent circulating ground currents
- Protects network signal lines entering or leaving control/critical panels.

### PERFORMANCE

- Operating Current 0.75 A (per pin)
- Operating Voltage 48 VDC
- Clamping Voltage 68 VDC
- Maximum Surge Current 10 kA (per pair)
- Insertion Loss <0.1 db
- Input/Output Connection RJ-45 Jacks
- Ground Terminal 10-32 Stud

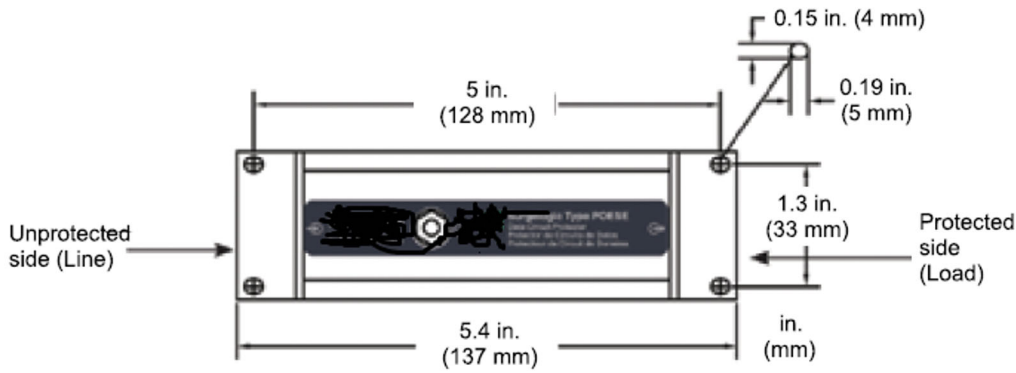
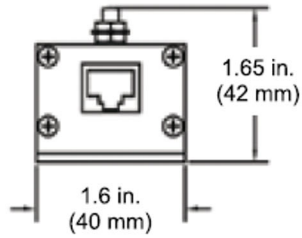
### MECHANICAL DESCRIPTION

- Mounting Flange
- Wiring 10 AWG copper wire
- Terminal Torque 7 lb-in (0.79 N-m)
- Operating and Storage Temperature -40° F to +140° F (-40° C to +60° C)

Model No.	Operating Voltage	Clamping Voltage	I/O Connection
TE-195-POE	48 VDC	68 VDC	RJ-45 (shielded)
TE-195-POE-IG	48 VDC	68 VDC	RJ-45 (isolated)



**TE-195-POE**  
SURGE PROTECTION  
DEVICE



Model No.	Operating Voltage	Clamping Voltage	I/O Connection
TE-195-POE	48 VDC	68 VDC	RJ-45 (shielded)
TE-195-POE-IG	48 VDC	68 VDC	RJ-45 (isolated)